

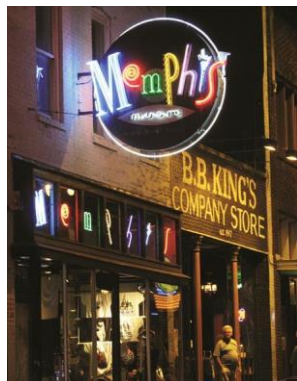


SMCPSRA presents...

Discover America's Music Cities

featuring New Orleans, Memphis & Nashville

Departing April 20 – 27, 2020



Book Now
& Save
\$100
Per Person

Highlights...

French Quarter • Choice of French Quarter Walking Tour or Panoramic Coach Tour of New Orleans • Swamp Tour • Mardi Gras World • Jazz Revue • Graceland • West Delta Heritage Center • Ryman Auditorium • Grand Ole Opry Show • Historic RCA Studio B • Country Music Hall of Fame • Whiskey Distillery

8 Days • 10 Meals: 7 Breakfasts • 3 Dinners

BOOK NOW: Double \$2,999; Single \$3,899; Triple \$2,969

Regular rates: Double \$3,099; Single \$3,999; Triple \$3,069

** All Rates are Per Person and are subject to change*

Included in Price: Round Trip Air from Baltimore Washington Intl Airport, Air Taxes and Fees/Surcharges, Hotel Transfers

Not included in price: Cancellation Waiver and Insurance of \$275 per person

IMPORTANT CONDITIONS: Your price is subject to increase prior to the time you make full payment. Your price is not subject to increase after you make full payment, except for charges resulting from increases in government-imposed taxes or fees. Once deposited, you have 7 days to send us written consumer consent or withdraw consent and receive a full refund. **(See registration form for consent.)**

Day 1: New Orleans, Louisiana - Tour Begins

Step back in time on a cultural getaway that opens in the "Jazz Capital of the World," New Orleans! This soulful city abounds with rich history, mouthwatering Cajun and Creole cuisine, and of course, an incomparable soundtrack.

Day 2: Choose French Quarter Walking Tour or Motorcoach Tour of New Orleans

It's your choice! Embark on a walking tour of New Orleans' famous French Quarter where you'll see the majestic St. Louis Cathedral, one of the city's most recognizable landmarks. Continue to the bustling French Marketplace where you'll explore Pirates Alley and view the Cabildo, the Presbytere and the Pontalba **-OR-** set out on a panoramic motorcoach tour of New Orleans with a local guide that begins along historic Esplanade Avenue and rolls on to see St. Louis Cemetery #3, which opened in 1854 and holds some of the most elaborate crypts found in the city's cemeteries. Relax during a drive along the shoreline of Lake Pontchartrain. This romantic road eventually leads to St. Charles Avenue, whisking you past gorgeous mansions and two world-famous universities, Loyola and Tulane. Whichever you choose, you'll stop to taste a true New Orleans favorite – beignets at the famed Café Du Monde. Tonight, get to know your travel companions at a festive

New Orleans-style welcome dinner. *Today breakfast and dinner will be included.*

Day 3: New Orleans

Journey through Louisiana's swamp on a cruise*

narrated by the captain himself. Learn about the history and ecology of this fascinating ecosystem while keeping an eye out for wildlife including bald eagles, herons, turtles and alligators! Then, **celebrate the festive side of New Orleans at Mardi Gras World**, the working warehouse where artisans create the spectacular floats for the famous parades. You'll even get to indulge in a tasting of king cake. Tonight, enjoy dinner on your own before meeting your Tour Manager and fellow travel companions at Maison Bourbon, a live jazz club in the French Quarter. *Today breakfast will be included.*

Day 4: New Orleans - Memphis, Tennessee

Travel north to Memphis, the birthplace of the Blues, Rock 'n' Roll and Soul. Enjoy Southern hospitality at your hotel just steps away from the iconic Graceland. *Today breakfast and dinner will be included.*

Day 5: Memphis

This morning, **put on your blue suede shoes and get ready to visit Graceland**, the palatial home of the King himself, Elvis Presley. Enter Elvis' 14-acre estate and visit

his home, original business office, trophy building with exhibits depicting Elvis' life at Graceland, racquetball building, and the Meditation Garden, where Elvis and members of his family have been laid to rest. Then head out on a one-of-a-kind tour of the city of Memphis. You may be tempted to sing along as local musicians board the coach to tell the stories of Memphis' musical heritage and its rich history. The remainder of your day is free to enjoy this city's vast musical offerings. You may wish to spend more time at Graceland** or join an optional Memphis Musical History Tour with dinner. *Today breakfast will be included.*

Day 6: Memphis - Nashville

Roll along Music Highway to the "Music Capital of the World," Nashville! We'll make a **stop at the West Delta Heritage Center** to discover the roots of the country blues sound that originated in West Tennessee. The Queen of Rock, Tina Turner, was born here in Brownsville, so it's only fitting that there's an exhibit dedicated to her. When you arrive in Nashville, enjoy a tour of the historic Ryman Auditorium,*** the original home of the Grand Ole Opry! This evening, **take your reserved seat at the renowned Grand Ole Opry.****** What began as a building where a local radio broadcast show aired once a week in 1925 has grown to

become an entertainment complex that attracts music fans from all over the world. *Today breakfast will be included.*

Day 7: Nashville

Your day begins with a tour of RCA Studio B giving you an insider's look at Nashville's oldest remaining recording studio, where Elvis Presley, Dolly Parton and Charlie Pride once recorded some of their classic hits. Learn how each artist recorded their chart-topping music in this famous studio – you may even have the opportunity to record your own hit! Then, **explore the Country Music Hall of Fame**, the largest museum of popular music in the world. Check out the museum's vast collections of memorabilia, costumes, recordings and instruments, artfully presented in cutting-edge exhibits that relay the colorful histories of country music and its artists. Afterwards, **discover the flavor of the region at a family-owned distillery** when you tour the facility and taste its Tennessee whiskey. *Today breakfast and dinner will be included.*

Day 8: Nashville - Tour Ends

Your rockin' musical journey comes to a close today. *Today breakfast will be included.*

Experience It! _____ The Ryman Auditorium

The "Mother Church of Country Music," the "Carnegie Hall of the South," the "Soul of Nashville"...welcome to Ryman Auditorium, a 2,000-plus seat venue in the heart of Nashville with a history as deep as country roots. Named for its founder, a wealthy riverboat owner, the Ryman first opened its doors in 1892 as the Union Gospel Tabernacle, but what many folks don't know is that the Ryman was the original home of the Grand Ole Opry. In fact, the Opry's formative years were spent on Ryman's stage, having featured the debuts of music titans Earl Scruggs and Hank Williams, and hosting the very first meeting between Johnny Cash and June Carter. Even Patsy Cline became a member of the Opry at the Ryman in 1960. And while the Grand Ole Opry has lived at a new venue since the seventies, the Ryman remains a vital music venue on the Nashville circuit, and is a designated National Historic Landmark thanks to its pivotal role in the popularization of country music. See it for yourself when country music comes to life in the Ryman's exhibit, "The Soul of Nashville," and let the Mother Church move you!

YOUR ITINERARY AT A GLANCE

Day	1 – 3	Sheraton New Orleans, New Orleans, Louisiana
Day	4, 5	The Guest House at Graceland, Memphis, Tennessee
Day	6, 7	Gaylord Opryland Resort, Nashville, Tennessee

On some dates alternate hotels may be used.

Please Note:

Book Now rates valid until Oct 21, 2019, valid on air inclusive packages only.

Economy air rate and schedule are applicable for groups of 10 or more traveling on the same flights and dates.

To complete your tour, we include roundtrip airport-to-hotel transfers when purchasing our airfare with your tour. If you have arranged for your own air, we are pleased to provide you the option of purchasing these transfers. Please note that all transfers will leave at pre-scheduled times.

Single accommodations are limited and are available on a first come, first served basis.

*The swamp tour is subject to change due to severe inclement weather. These changes may include items being missed during the trip; however, every effort will be made to substitute for another attraction if possible.

**Your admission to Graceland includes the mansion tour only.

***On some dates the Old Ryman Auditorium may be closed for special events.

****The Grand Ole Opry moves to the Ryman Auditorium during the months of November and December and throughout the year during special events.

Please be advised many airlines do not provide advance seat assignments until check-in at the airport. Advance seating will be subject to the airline's terms and conditions.

IDENTIFICATION

Travel within USA

For travel completed by September 30, 2020, all airlines will ask for identification when you check in. It is recommended that you carry a passport if you have one. A driver's license (with a photo I.D.) is also acceptable for domestic flights.

Effective for travel October 1, 2020 forward, the REAL ID Act standards for identification while travelling will be in effect. This means a standard issued driver's license used as a form of identification will no longer be accepted for domestic air travel within the United States. Instead, a Real ID compliant form of identification must be presented both at the time of booking air travel with Collette and upon checking in at the airport to board any flight. Any fees associated with changing a reservation resulting from a non-compliant identification will be the responsibility of the guest. For more information on Real ID, please visit the Department of Homeland Security website: <https://www.dhs.gov/real-id>

This tour requires average physical activity. You should be in good health, able to climb stairs and walk reasonable distances, possibly over uneven grounds and cobblestone streets.

CST#2006766-20 UBN#601220855 Nevada Sellers of Travel Registration No. 2003-0279

Optional Hotel Upgrade Available

May 1, 2019 – April 30, 2020 \$100 USD per person, double, land only

During your stay at the **Gaylord Opryland Resort**, you can choose to upgrade your room to a Premium Garden View room. Enjoy spectacular atrium views at the above cost per person, double. Please inquire at time of booking.

For more information contact

Lonna Siskind • St. Mary's County Public Schools Retirees Association, Inc

(301) 862-1315 • smcpsra@gmail.com